



# Profile

## METALLURGICAL MATERIAL DEPARTMENT



## CONTENT:

### VAN LONG CDC OVERVIEW:

1. OVERVIEW: PAGES 3 - 8
2. BUSINESS INFRASTRUCTURE: PAGE 9
3. QUALITY SYSTEM - QUALITY CONTROL: PAGES 10 - 11

### METALLURGICAL MATERIAL DEPARTMENT OVERVIEW:

4. ORGANIZATIONAL CHART: PAGE 12
5. PRODUCTS: PAGES 13 - 17
6. QUALITY CONTROL: PAGE 18
7. LOGISTICS DELIVERY: PAGE 19
8. TYPICAL CUSTOMERS: PAGE 20
9. VAN LONG CDC BUSINESS CULTURE: PAGE 21



*Value added - Value of trust*

VanLongCDC

# METALLURGICAL MATERIAL DEPARTMENT

*Professional materials supplier for the metallurgical industry.*





Value added - Value of trust

## VAN LONG CDC OVERVIEW- OVERVIEW

VanLongCDC

4

Vân Long CDC Investment Trading Joint Stock Company (VÂN LONG CDC) was established on September 18, 2008, in Hai Phong City, with the mission: "Connecting the supply chain." We engage in trading, import, and export of various items, including:

- Raw materials for the steel industry, casting industry, and metallurgy
- Basic chemicals
- Plastic granules
- Organic solvents
- Metal

Additionally, we undertake investment activities to support our trading operations.

Total business capital of Vân Long CDC: 600 billion VND (2024).







## VAN LONG CDC OVERVIEW– LOCATION



### □ HEADQUARTERS:

15A An Tri Area, Hung Vuong Ward, Hong Bang District, Hai Phong City, Vietnam

### □ WAREHOUSES:

#### 1. Warehouse (Northern Region):

Tan Tien Phong Warehouse

Address: No. 4, K9 Street, Dong Hai Ward, Hai An District, Hai Phong City, Vietnam.

#### 2. Warehouse (Southern Region):

Hop Tien Warehouse

Address: No. 10 Street, Song Than 1 Industrial Park, Di An City, Binh Duong Province, Vietnam.

### □ LOGISTICS:



Warehouse located adjacent to Hai Phong Port



Transportation::

- By truck
- By sea
- By rail



## VAN LONG CDC OVERVIEW- HISTORY



VAN LONG CO., LTD



INJECTION FACTORY



VÂN LONG CDC



2015

Achieved export revenue of over 1,300 billion dong from Ferro products with a customer network spanning both international and domestic markets.



2023

- Top 5 importers of metallurgical materials in Vietnam.
- Top 2 largest importer of liquid caustic soda in Northern Vietnam.
- Top 3 largest supplier of solvents in Northern Vietnam.
- Top 5 for exporting recycled aluminum and lead ingots.

1999

04/09/1999 Van Long Co., Ltd (CDC) was founded, operating in production and trading

2002

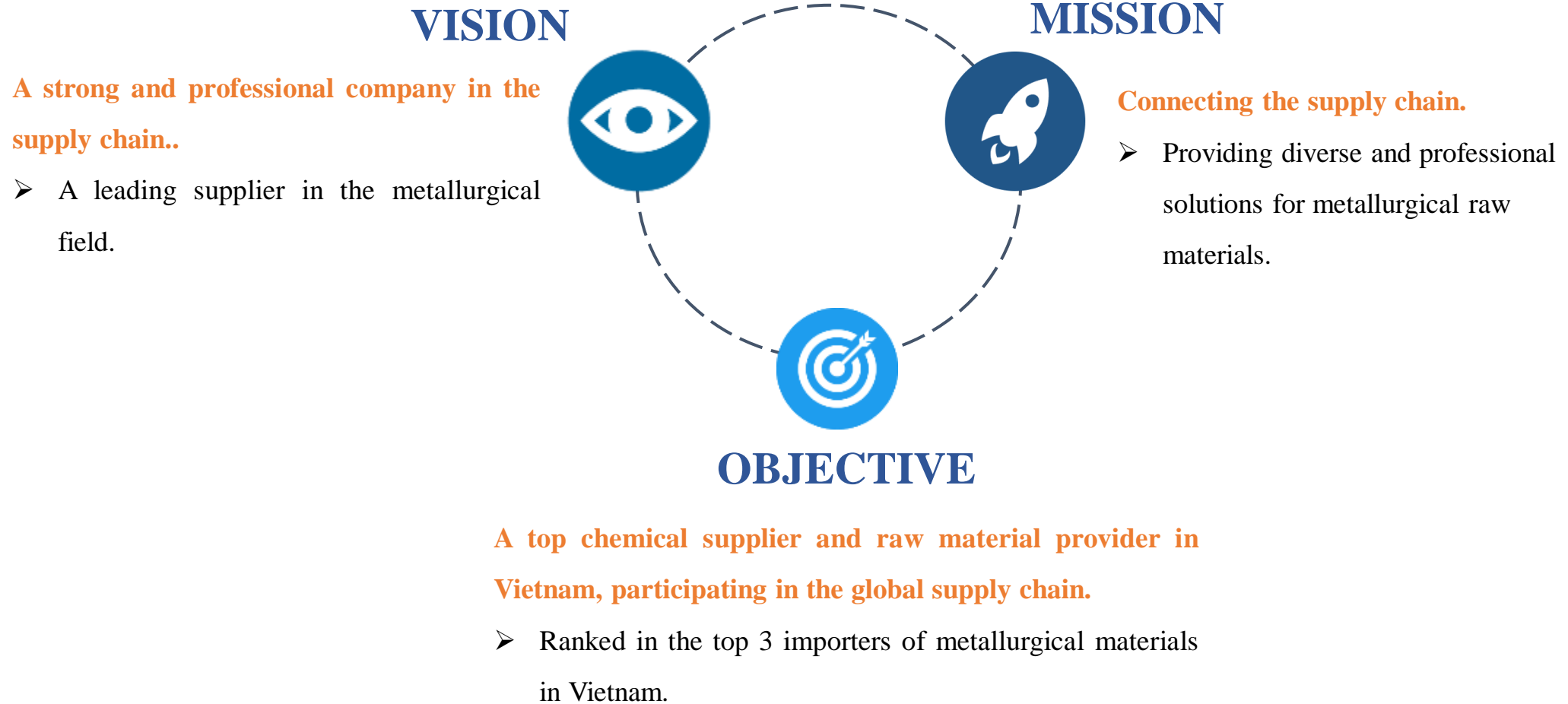
Established injection factory.

2008

On September 18, 2008, Vân Long CDC Trading and Investment Joint Stock Company (Vân Long CDC) was established. The company shifted its trading mission from CDC to Vân Long CDC.

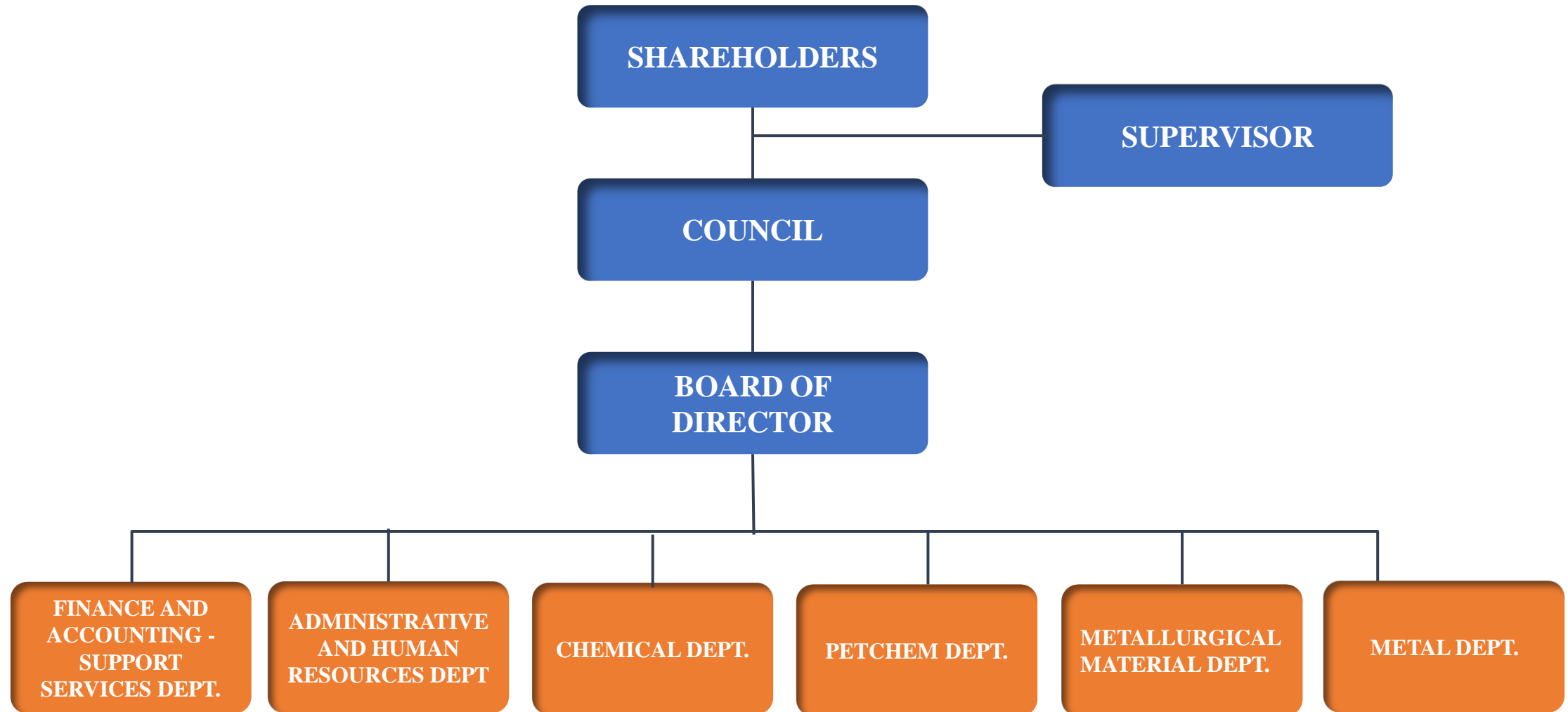


## VAN LONG CDC OVERVIEW– VISION – MISSION - OBJECTIVE





## VAN LONG CDC OVERVIEW- ORGANIZATIONAL CHART







Value added - Value of trust

## VAN LONG CDC OVERVIEW – BUSINESS INFRASTRUCTURE

9



### NORTHERN WAREHOUSE SYSTEM

- Warehouse with an area of over 2000m<sup>2</sup>
- Goods storage and preservation
- Safety system

### SOUTHERN WAREHOUSE SYSTEM

- Warehouse with an area of over 1000m<sup>2</sup>
- Goods storage and preservation
- Safety system



### TANK FARM SYSTEM

Total area: 21,646 m<sup>2</sup>  
Tank capacity: 24,200 CBM (14 tanks)  
Deep-water port: 20,000 DWT

### EQUIPMENT - VEHICLES

- Forklifts for loading goods into containers
- Loading ramps for forklifts
- Packaging equipment
- Tools and equipment for processing goods
- Transportation vehicles



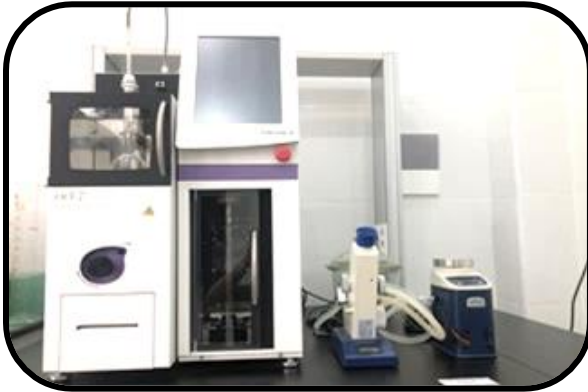


Value added - Value of trust

## VAN LONG CDC OVERVIEW- QUALITY CONTROL

VanLongCDC

10



Automatic Distillation Tester



Molecular Absorption Spectrometer

**Giám định chất lượng độc lập**

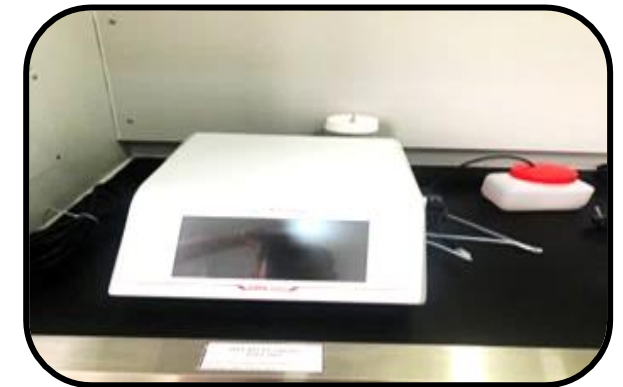


**HaiHachem's Laboratory**

**intertek**  
Total Quality. Assured.



Karl Fischer Moisture Titration



Density meter





Value added - Value of trust

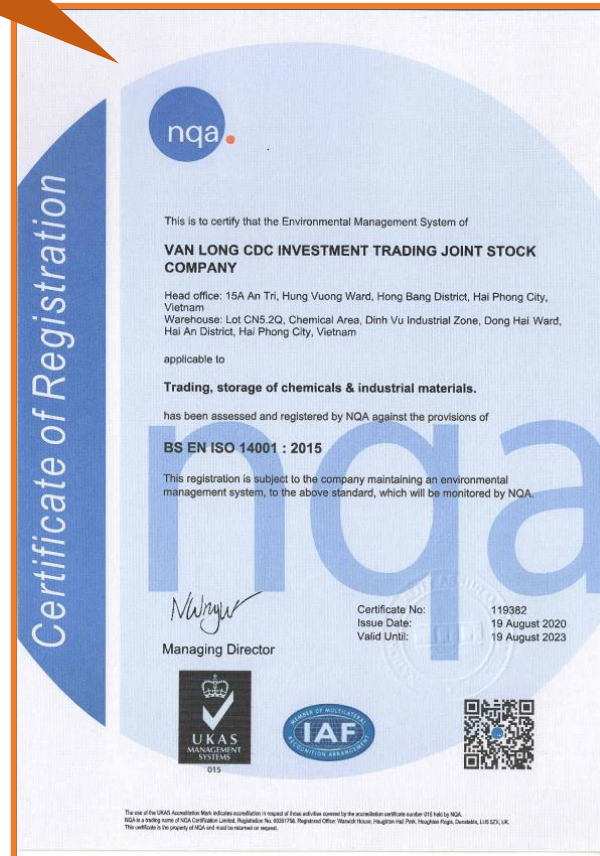
# VAN LONG CDC OVERVIEW- QUALITY SYSTEM

11

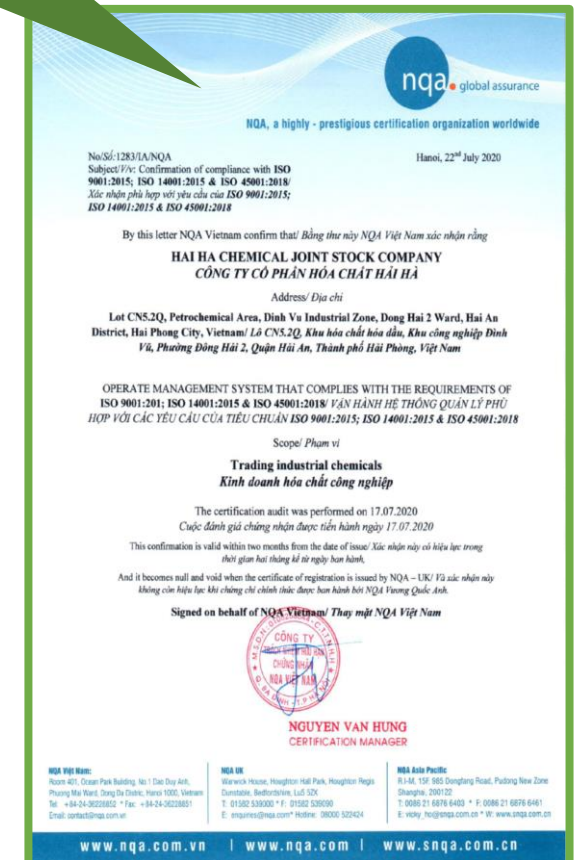
## VANLONG CDC ISO 9001:2015



## VANLONG CDC ISO 14001:2015

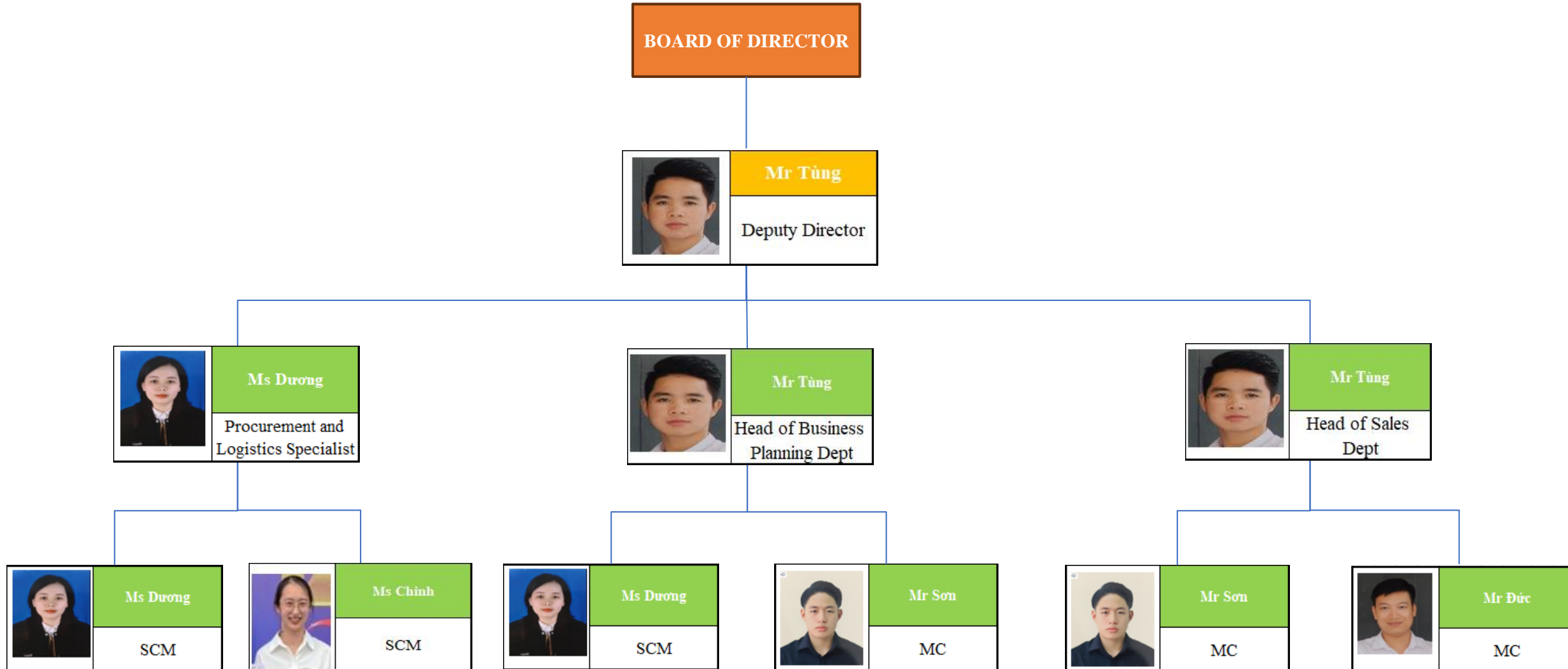


## HAIHACHEM ISO 9001:2015; 14001:2015; 45001:2018





# METALLURGICAL MATERIAL DEPARTMENT- ORGANIZATIONAL CHART





## Ferro Silicon :



## Ferro Silicon 75% min

*Components :*

Si: 75% min, S: 0.02% max, P: 0.03% max, Al: 1.5% max, C: 0.2% max

*Size :* (10-60mm), (10-100mm), (200-400mm) .....

## Ferro Silicon 72% min

*Components :*

Si: 72% min, C: 0.2% max, S: 0.04% max, P: 0.04% max, Al: 1.5-2.0% max

*Size :* (10-60mm), (10-100mm), (200-400mm) .....

## Ferro Silicon 65% min

*Components :*

Si: 65% min, C: 0.3% max, S: 0.05% max, P: 0.05% max, Al: 3.5% max

*Size :* (10-60mm), (10-100mm), (200-400mm) .....

## Ferro Mangan :

Ferro Mangan 65%  
High Carbon*Components*

Mn: 65% min; S: 0.03% max; P: 0.3% max; Si: 1.5% max, C: 8% max

*Size :* (10-60mm), (50-100mm), .....Ferro Mangan 73-75%  
High Carbon*Components :*

Mn : 73-75% min, C : 8 % max, Silic : 1.5% max S : 0.03% max, P : 0.3% max

*Size :* (10-60mm), (50-100mm), .....Ferro Mangan 80%  
Low Carbon*Components :*

Mn: 80% min, C: 1.0% max, Si: 1.5% max, P: 0.3% max, S: 0.03% max.

*Size :* (10-60mm), (50-100mm), .....





## Ferro Silicon Mangan:



### Ferro Silico Mangan 6014

*Components :*

Mn: 60% min, Si:14% min, C: 2.5% max, P: 0.35% max, S: 0.03% max

*Size :* (10-60mm), (50-100mm), (100-300mm) .....

### Ferro Silico Mangan 6517

*Components :*

Mn: 65% min, Si:17% min, C: 2.0% max, P: 0.35% max, S: 0.03% max.

*Size :* (10-60mm), (50-100mm), (100-300mm) .....

## Ferro Chrome:



### Ferro Chrome 60% Low Carbon

*Components*

Cr: 60% min, C: 0.1% max, Si: 1.5% max, P: 0.04% max, S: 0.04% max.

*Size :* (10-60mm), (50-100mm), .....

### Ferro Chrome 60% High Carbon

*Components :*

Cr: 60% min, C: 8.5% max, Si: 3.5% max, P: 0.05% max, S: 0.05% max.

*Size :* (10-60mm), (50-100mm), .....



## Silic Metal:



### Silic Metal 441

*Components :*

Si: 99% min, Al: 0.4% max, Fe: 0.4% max, Ca: 0.1% max.

*Size :* (10-100mm), .....

### Silic Metal 553

*Components :*

Si: 98.5% min, Al: 0.5% max, Fe: 0.5% max, Ca: 0.3% max.

*Size :* (10-100mm), .....

### Silic Metal 3303

*Components :*

Si: 99.3% min, Fe: 0.3% max, Al: 0.3% max, Ca: 0.03% max

*Size :* (10-100mm), .....

## Rare Ferro:



### Ferro Vanadi

*Components*

V 80% min, C 0.3% max, Si 1.5% max, P 0.06% max, S 0.05% max, Al 2% max

*Size :* (10-60mm), (10-100mm), .....

### Ferro Molybdenum

*Components :*

Mo 60% min, Si 1% - 2% max, P 0.05% max, C 0.1% max, Cu 0.5% max, Sb 0.04% - 0.08% max, Sn 0.04% max - 0.08% max

*Size :* (10-60mm), (10-100mm), .....



Coke:

**Coke***Components :*

FC 84.5% min, S 0.75% max, Moisture 10% max, Ash 13% max, VM 1.5% max

*Size :* (5-25mm), (25-80mm), .....**Graphite Electrodes***Components :*

According to standards for each type - Steelmaking, Metallurgy

*Size :***Silicon Carbide***Components :*SiC 64% min, H<sub>2</sub>O 2% max, FC 10% max*Size :* (0-3mm), (1-4mm), (1-5mm) .....

Other:

**Carbon Raiser***Components*

FC: 99%, Ash: 0.5%, V: 0.5%, S: 0.05%, moisture: 0.5%

FC: 99%, Ash: 0.5%, V: 0.5%, S: 0.5%, moisture: 0.5%

*Size :* (1-3mm), (1-5mm), .....**Inoculant***Components :*

Si: 70% min, Ba: 1-3%, Ca: 1-2.5%, Al: 1-2%.

*Size :* (1-3mm), (1-6mm), .....**Nordulizer***Components :*

Si: 44-48%, Mg: 26-28%, Ca: 2.0-3.0%, Re: 0.7-1.0%, Al: 1.2%.

*Size :* (1-3mm), (1-6mm), .....**Pig iron***Components :*

C: 3.5-4.5% max, Mn: 1.0% max, Si: 1.7-2.2% max, P: 0.1% max, S: 0.05% max

*Size :* 6-12kg/each



## METALLURGICAL MATERIAL DEPARTMENT– PRODUCTS

No	Name	Components :
1	Ferro silic 72%	Si: 72% min, C: 0.2% max, S: 0.04% max, P: 0.04% max, Al: 1.5-2.0% max. size: (10-60mm), (10-100mm), (200-400mm)
2	Ferro Silic 75%	Si: 75% min, S: 0.02% max, P: 0.03% max, Al: 1.5% max, C: 0.2% max. size: (10-60mm), (10-100mm), (200-400mm)
3	Ferro silic 65%	Si: 65% min, C: 0.3% max, S: 0.05% max, P: 0.05% max, Al: 3.5% max. size: (10-60mm), (10-100mm), (200-400mm)
4	Ferro Mangan 65% high carbon	Mn: 65% min; S: 0.03% max; P: 0.3% max; Si: 1.5% max, C: 8% max. size: (10-60mm), (50-100mm)
5	Ferro Mangan 73-75% high carbon	Mn : 73-75% min, C : 8 % max, Silic : 1.5% max S : 0.03% max, P : 0.3% max. size: (10-60mm), (50-100mm)
6	Ferro Mangan 80% low carbon	Mn: 80% min, C: 1.0% max, Si: 1.5% max, P: 0.3% max, S: 0.03% max.. size: (10-60mm), (50-100mm)
7	Ferro Chrome 60% low carbon	Cr: 60% min, C: 0.1% max, Si: 1.5% max, P: 0.04% max, S: 0.04% max.. size : (10-60mm), (50-100mm)
8	Ferro Chrome 60% high carbon	Cr: 60% min, C: 8.5% max, Si: 3.5% max, P: 0.05% max, S: 0.05% max.. size : (10-60mm), (50-100mm)
9	Silicon Metal 441	Si: 99% min, Al: 0.4% max, Fe: 0.4% max, Ca: 0.1% max.. size : (10-100mm)
10	Silicon Metal 553	Si: 98.5% min, Al: 0.5% max, Fe: 0.5% max, Ca: 0.3% max.size: (10-100mm)
11	Silicon Metal 3303	Si: 99.3% min, Fe: 0.3% max, Al: 0.3% max, Ca: 0.03% max. size: (10-100mm)

12	Ferro Vanadi	V 80% min, C 0.3% max, Si 1.5% max, P 0.06% max, S 0.05% max, Al 2% max size: (10-60mm), (10-100mm)
13	Ferro Molybdenum	Mo 60% min, Si 1% - 2% max, P 0.05% max, C 0.1% max, Cu 0.5% max, Sb 0.04% - 0.08% max, Sn 0.04% max - 0.08% max size: (10-60mm), (10-100mm)
14	Ferro Silico Mangan 6517	Mn: 65% min, Si:17% min, C: 2.0% max, P: 0.35% max, S: 0.03% max. size: (10-60mm), (50-100mm), (100-300mm)
15	Ferro Silico Mangan 6014	Mn: 60% min, Si:14% min, C: 2.5% max, P: 0.35% max, S: 0.03% max size : (10-60mm), (50-100mm), (100-300mm)
16	Pig iron	C: 3.5-4.5% max, Mn: 1.0% max, Si: 1.7-2.2% max, P: 0.1% max, S: 0.05% max, Weight 6-12kg/each
17	Carbon raiser	FC: 99%, Ash : 0.5%, V : 0.5%, S: 0.05%, moisture: 0.5% FC: 99%, Ash : 0.5%, V : 0.5%, S: 0.5%, moisture: 0.5% size: (1-3mm),(1-5mm)
18	Inoculnat	Si: 70% min, Ba: 1-3%, Ca: 1-2.5%, Al: 1-2%, Cỡ hạt 1-3mm, 1-6mm.
19	Nordulizer	Si: 44-48%, Mg: 26-28%, Ca: 2.0-3.0%, Re: 0.7-1.0%, Al: 1.2%, Cỡ hạt: 0-3mm, 3-6mm
20	Coke	FC 84.5% min, S 0.75% max, Moisture 10% max, Ash 13% max, VM 1.5% max size: (5-25mm), (25-80mm)
21	Graphite Electrode	According to standards for each type - Steelmaking, Metallurgy
22	Silicon Carbide	SiC 64% min, H2O 2% max, FC 10% max size: (0-3mm), (1-4mm), (1-5mm)



## SGS FeCr

Certificate N°: 2401160305

SGS

Page N°: 2/3

SGS REF No.200018576/1

DATE: Kolkata, 16.01.2024

All the bags were sealed with SGS Yellow Plastic stripe seals no. 415101-415127 & 415128-415154.

**SIZE ANALYSIS:** The gross composite samples was collected passed through square aperture sieves of 10 mm, 100 mm size and the result ascertained are as under:

Size	Results obtained
Below 10 mm	3.07%(three decimal zero seven)
10mm – 100 mm	95.64%(nine five decimal six four)
Above 100 mm	1.29%(one decimal two nine)

**CHEMICAL ANALYSIS:** One sealed sample pack was submitted to our laboratory for analysis and the result ascertained are as under

Parameters	Method/ Protocol	Results reported
Chromium as Cr	IS 13452-1992 (part-5) Reaff 2018	61.92%(six one decimal nine two)
Silicon as Si	IS 13452-1992 (part-1) Reaff 2018	1.98%(one decimal nine eight)
Phosphorus as P	IS 13452-2003 (part-7) Reaff 2019	0.024%(zero decimal zero two four)
Carbon as C	ASTM : E 1019-2018	7.96%(seven decimal nine six)
Sulphur as S	ASTM : E 1019-2018	0.050%(zero decimal zero five zero)

**CONTAINER STUFFING SUPERVISION:** Prior to stuffing, the cleanliness of the containers were visually examined and found to be satisfactory. The material was manually packed into the bags kept inside containers and such 02 X 20' containers were stuffed in our presence.

**WEIGHMENT SUPERVISION:** The material stuffed into 02 X 20' containers were weighed for gross & tare on the calibrated weighbridge at warehouse/plant and as per the weighment slip submitted net weight ascertained are as under:

Sl. No.	Container No.	No. of Bags	Gross Wt. in MT (Cargo-bags)	SGS Seal No.
1.	SEGU 1894958	27	27.040	007189
2.	BMOU 1336305	27	27.040	007193
		54	54.080	

Gross weight of High Carbon Ferro Chrome including bags	54.080 MT
Less: weight of bags	0.080 MT
Net weight of high Carbon Ferro Chrome	54.000 MT

SGS India Private Limited

Ecopace, Block – 3A, 2nd Floor, East Wing,

Premises IFZ-11, Action Area-II, Rajarhat,

New Town, Kolkata 700 156, W.B, India

Phone : +91 33 6650 6101 / 6650 6101

Fax : +91 03 2324 0740

This document is issued by the Company assigned to the General Conditions of Service (including application and conditions of sale). Attention is drawn to the limitations of liability, indemnification and warranty and conditions of sale.

This document is to be treated as an original until the meaning of UCP 600. Any holder of this document is advised that information contained herein, reflects the Company's findings at the time of its issuance only and within the limits of carrier's obligations. If any. The Company's responsibility is to the Client and this document does not constitute parties to a transaction from exercising all rights and obligations under the transaction documents. Any unauthorized alteration, forgery or falsification of the content or appearance of this document, is prohibited and may result in the total seizure of the transaction.

## SGS FeMn

[illegible]

## SGS FeSi

[illegible]





Value added - Value of trust

## METALLURGICAL MATERIAL DEPARTMENT- LOGISTICS

VanLongCDC

19



UNITY - INNOVATION - CUSTOMER ORIENTATION



Value added - Value of trust

## METALLURGICAL MATERIAL DEPARTMENT– MAIN CUSTOMERS

VanLongCDC

20



**CÔNG TY CỔ PHẦN THÉP Á CHÂU**

Lô B6 - KCN Hiệp Phước - X. Hiệp Phước - H. Nhà Bè - TPHCM

Mã số thuế: 0305696261

Tel: 083873 4101-08.3781 8127 Fax: 08.3781 8108-3873 4274

Email: thepachau@ymail.com





Value added - Value of trust

## VAN LONG CDC OVERVIEW– BUSINESS CULTURE

21

To support commercial business activities, Van Long CDC prioritizes training programs, extracurricular activities, and employee welfare. Van Long CDC highly values the individual worth of each person and always provides opportunities for everyone to develop and grow together.



CUSTOMER CONFERENCE



TRAINING



ANNUAL TOURISM



FRIENDLY FOOTBALL



Value added - Value of trust

VanLongCDC

VAN LONG CDC INVESTMENT TRADING JOINT STOCK COMPANY

22

# THANK YOU!

FOR MORE INFORMATION :

[www.vcdc.com.vn](http://www.vcdc.com.vn)

[www.hoachathaiha.vn](http://www.hoachathaiha.vn)