



Added value – Trusted value

VanLongCDC

1

Profile

METALS DEPARTMENT

2024

VAN LONG CDC INVESTMENT TRADING JOINT STOCK COMPANY



CONTENT:

VAN LONG CDC OVERVIEW:

1. OVERVIEW: PAGES 3 - 8
2. BUSINESS INFRASTRUCTURE: PAGE 9
3. QUALITY SYSTEM - QUALITY CONTROL: PAGES 10 - 11

METALS DEPARTMENT OVERVIEW:

4. ORGANIZATIONAL CHART: PAGE 12
5. PRODUCTS: PAGES 13 - 16
6. QUALITY CONTROL: PAGE 17
7. LOGISTICS DELIVERY: PAGE 18
8. TYPICAL CUSTOMERS: PAGE 19
9. TYPICAL SUPPLIERS: PAGE 20
10. VAN LONG CDC BUSINESS CULTURE: PAGE 21



Added value – Trusted value

VanLongCDC

METALS DEPARTMENTS

Professional materials supplier for casting and galvanizing industry.





Added value – Trusted value

VanLongCDC

VAN LONG CDC OVERVIEW– OVERVIEW

4

Vân Long CDC Investment Trading Joint Stock Company (VÂN LONG CDC) was established on September 18, 2008, in Hai Phong City, with the mission: "Connecting the supply chain." We engage in trading, import, and export of various items, including:

- Metals
- Raw materials for the steel industry, casting industry, and metallurgy
- Basic chemicals
- Plastic granules
- Organic solvents

Additionally, we undertake investment activities to support our trading operations.

Total business capital of Vân Long CDC: 600 billion VND (2024).





VAN LONG CDC OVERVIEW– LOCATION



□ HEADQUARTERS:

15A An Tri Area, Hung Vuong Ward, Hong Bang District, Hai Phong City, Vietnam

□ WAREHOUSES:

1. Warehouse (Northern Region):

Tan Tien Phong Warehouse

Address: No. 4, K9 Street, Dong Hai Ward, Hai An District, Hai Phong City, Vietnam.

2. Warehouse (Southern Region):

Hop Tien Warehouse

Address: No. 10 Street, Song Than 1 Industrial Park, Di An City, Binh Duong Province, Vietnam.

□ LOGISTICS:



Warehouse located adjacent to Hai Phong Port



Transportation::

- By truck
- By sea
- By rail



Added value – Trusted value

VanLongCDC

VAN LONG CDC OVERVIEW– HISTORY

6



VAN LONG CO., LTD



INJECTION FACTORY



VÂN LONG CDC



2015

Achieved export revenue of over 1,300 billion dong from Ferro products with a customer network spanning both international and domestic markets.



2023

- Top 5 for exporting recycled aluminum and lead ingots.
- Top 5 importers of metallurgical materials in Vietnam.
- Top 2 largest importer of liquid caustic soda in Northern Vietnam.
- Top 3 largest suppliers of solvents in Northern Vietnam.

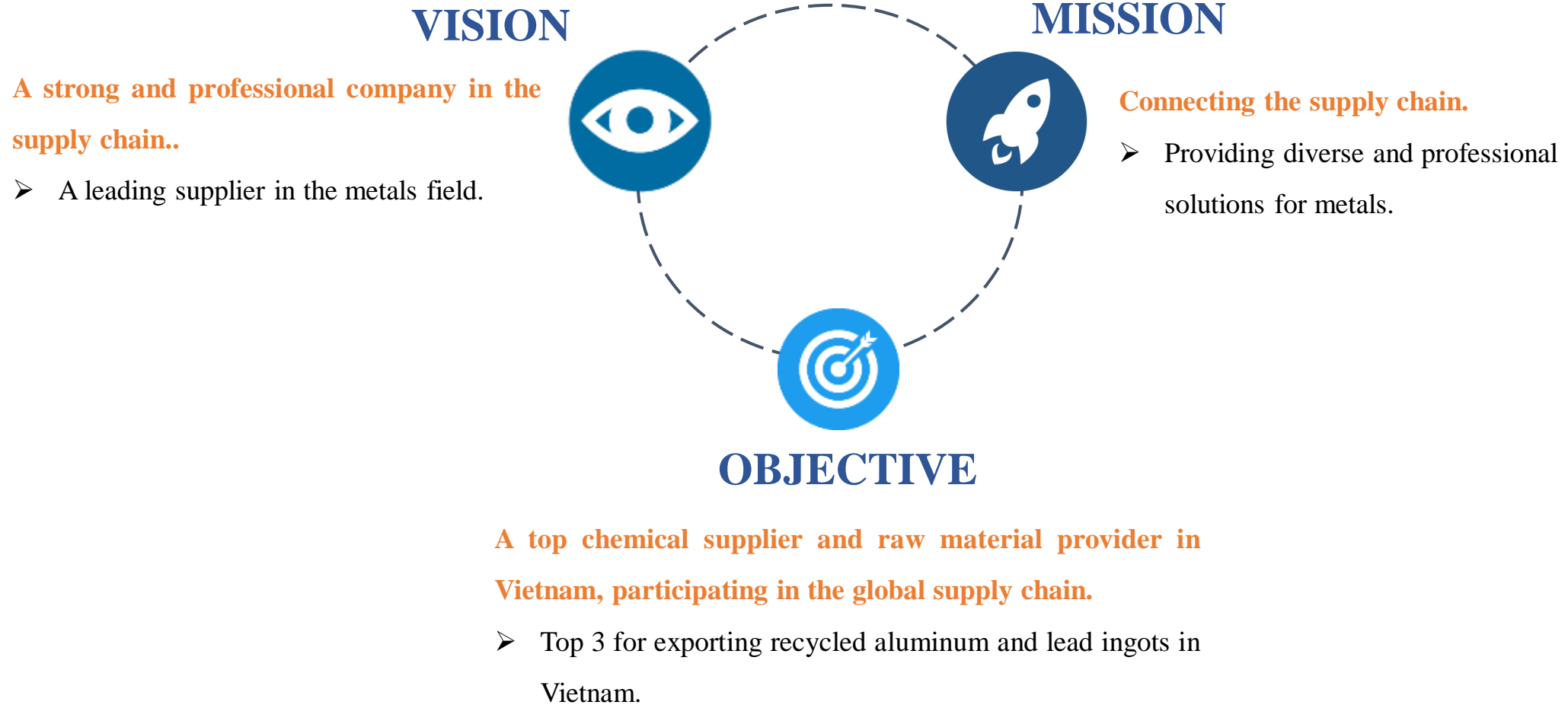
04/09/1999 Van Long Co., Ltd (CDC) was founded, operating in production and trading

Established injection factory.

On September 18, 2008, Vân Long CDC Trading and Investment Joint Stock Company (Vân Long CDC) was established. The company shifted its trading mission from CDC to Vân Long CDC.

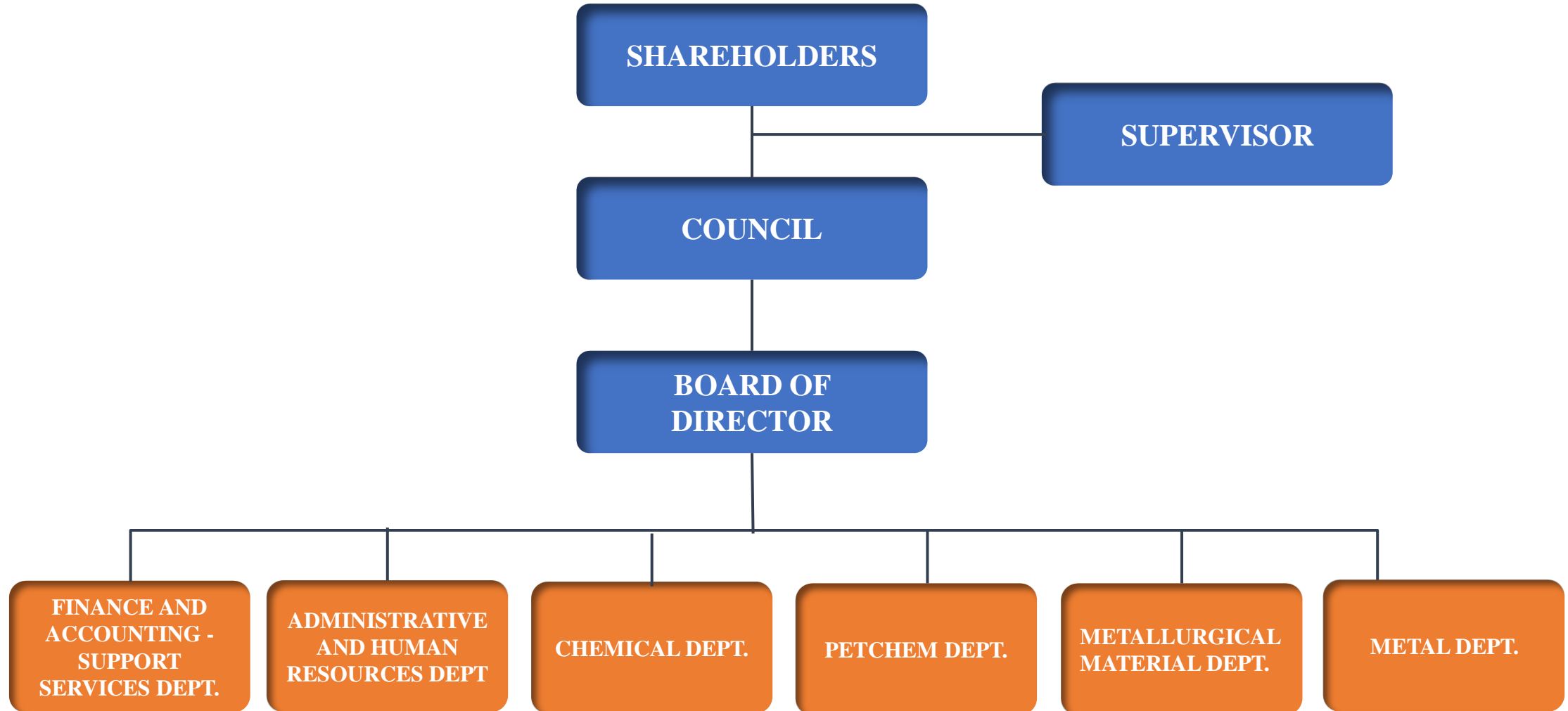


VAN LONG CDC OVERVIEW– VISION – MISSION - OBJECTIVE





VAN LONG CDC OVERVIEW– ORGANIZATIONAL CHART





Added value – Trusted value

VanLongCDC

VAN LONG CDC OVERVIEW– BUSINESS INFRASTRUCTURE

9



NORTHERN WAREHOUSE SYSTEM

- Warehouse with an area of over 2000m²
- Goods storage and preservation
- Safety system

SOUTHERN WAREHOUSE SYSTEM

- Warehouse with an area of over 1000m²
- Goods storage and preservation
- Safety system



TANK FARM SYSTEM

Total area: 21,646 m²
Tank capacity: 24,200 CBM (14 tanks)
Deep-water port: 20,000 DWT

EQUIPMENT - VEHICLES

- Forklifts for loading goods into containers
- Loading ramps for forklifts
- Packaging equipment
- Tools and equipment for processing goods
- Transportation vehicles





Added value – Trusted value

VAN LONG CDC OVERVIEW– QUALITY CONTROL

VanLongCDC

10



Automatic Distillation Tester



Molecular Absorption Spectrometer

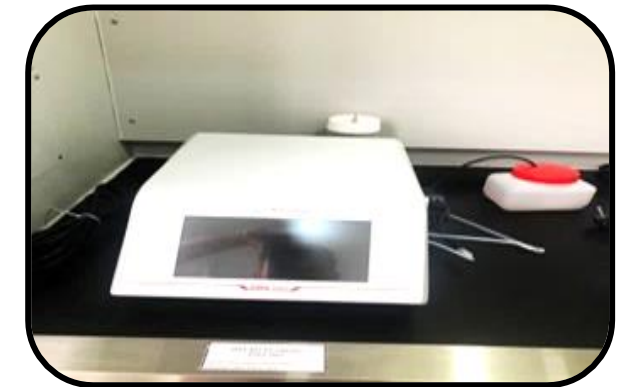
The Third Surveyor Parties



HaiHachem's Laboratory



Karl Fischer Moisture Titration



Density meter



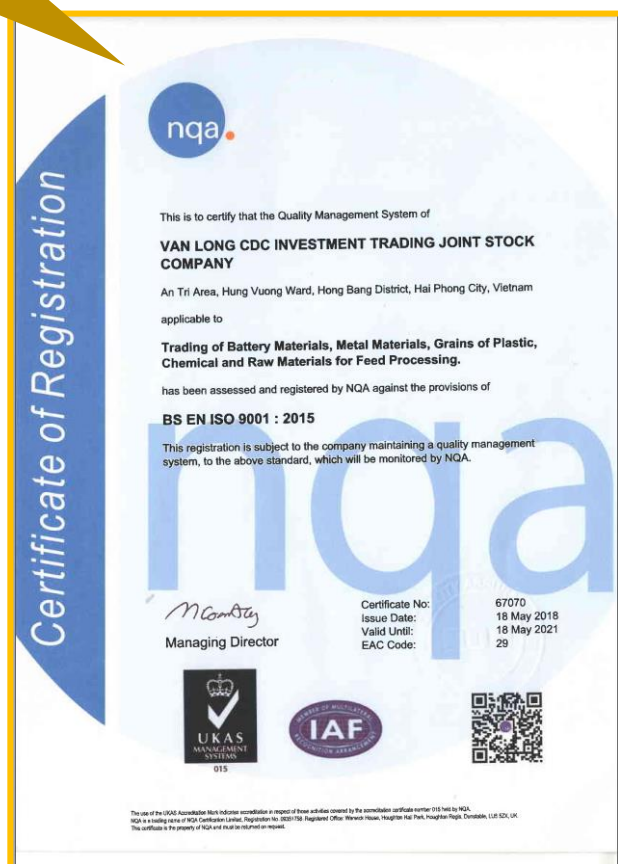
Added value – Trusted value

VAN LONG CDC OVERVIEW– QUALITY SYSTEM

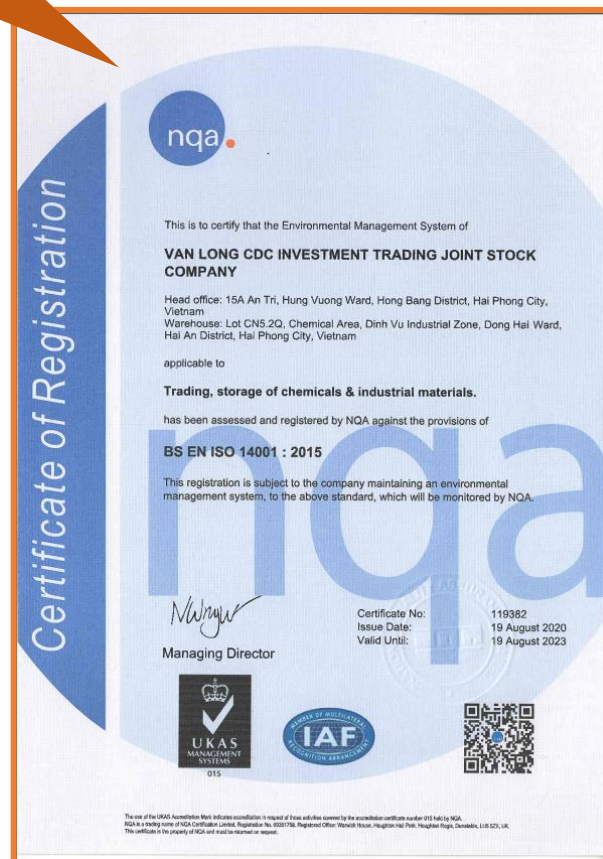
VanLongCDC

11

VANLONG CDC ISO 9001:2015



VANLONG CDC ISO 14001:2015

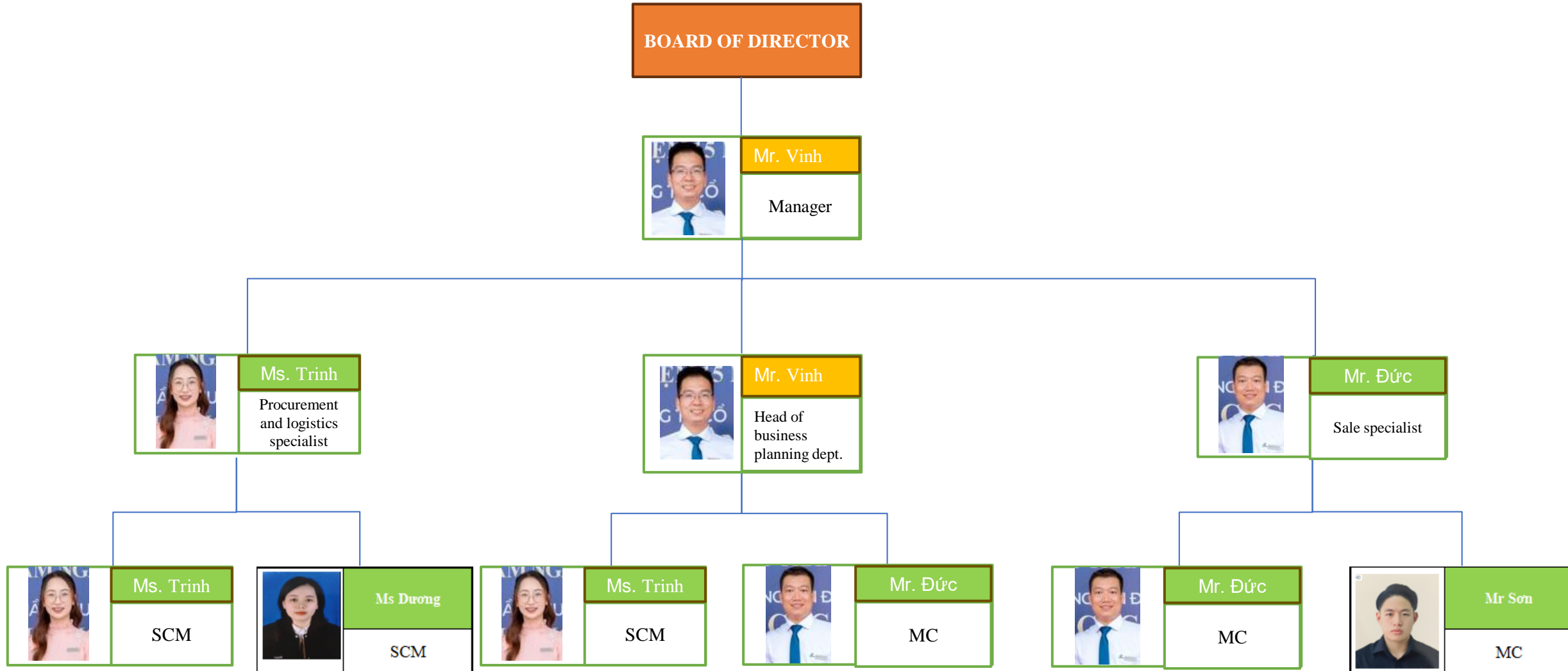


HAIHACHEM ISO 9001:2015; 14001:2015; 45001:2018





METALS DEPARTMENT– ORGANIZATIONAL CHART





RECYCLED ALUMINUM



ADC 12	<i>Specifications:</i> Cu 1.5 - 3.5%, Si 9.6 - 12%, Mg 0.3% max, Zn 1.0% max, Fe 1.0% max, Mn 0.50% max, Ni 0.50 max, Sn 0.30% max, Pb 0.1% max <i>Packing: ingot, packed in bundle 500kg, 1000kg...</i>
ADCSH	<i>Specifications:</i> Cu 1.0-2.5%, Si 9.0 - 11%, Mg 0.5% max, Zn 2.0% max, Fe 1.1% max, Mn 0.50% max, Ni 0.50% max, Sn 0.30% max, Pb 0.1% max <i>Packing: ingot, packed in bundle 500kg, 1000kg...</i>
HD2	<i>Specifications:</i> Cu 1.5 - 4.0%; Si 10.5 - 12%; Mg 0.05-0.35% max; Zn 2.5% max; Fe 1.1% max; Mn 0.50% max; Ni 0.50% max; Sn 0.20% max; Pb 0.2% max <i>Packing: ingot, packed in bundle 500kg, 1000kg...</i>

Al 96%	<i>Specifications:</i> Al 96% min, Si 0.6% max, Fe 1.0% max, Cu 0.4% max, Mn 0.9% max, Mg 1.65% max, Zn 0.5% max, Pb 0.1% max. <i>Packing: ingot, packed in bundle 1400 - 1800kg...</i>
Al 94%	<i>Specifications:</i> Al 94% min, Si 1.0% max, Fe 3.0% max, Cu 1.0% max, Mg 1.0% max <i>Packing: pellet, d: 35-65mm, h: 20-45mm, packed in jumbo bags 1000kg</i>
Al 6063	<i>Specifications:</i> Cu 0.1% max, Si 0.2 – 0.6%, Mg 0.45 - 0.9%, Zn 0.1% max, Fe 0.35% max, Mn 0.10% max, Cr 0.10% max <i>Packing: ingot, packed in bundle 500kg, 1000kg...</i>



MAGNESIUM



ZINC



<i>AZ91D</i>	<i>Specifications:</i> Mg 89.6% min, Al 8.3 - 9.7 %, Zn 0.35 - 1.0%, Si 0.1% max, Mn 0.15-0.5%, Be 0.002% max <i>Packing: ingot or chip, palletized weight 1000kg or in jumbo bags 1000kg</i>
<i>Pure Mg</i>	<i>Specifications:</i> Mg 99.9% min <i>Packing: ingot, palletized weight 1000kg ...</i>
<i>Other Mg alloys</i>	AZ31, AM50, AM60,

<i>SHG</i>	<i>Specifications:</i> Zn: 99.995% min <i>Packing: ingot, packed in bundle 1000kg, ...</i>
<i>Zamak3</i>	<i>Specifications:</i> Al 3.9-4.2%, Tl 0.001% max, Sn 0.001% max, Si 0.02% max, Pb 0.003% max, Ni 0.001% max, Mg 0.04-0.05%, In 0.0005% max, Fe 0.02% max, Cu 0.03% max, Cd 0.002% max <i>Packing: ingot, packed in bundle 1000kg, ...</i>



LEAD



Pure lead

Specifications:

Pb 99.97% min, Pb 99.99% min

Packing: ingot, packed in bundle 1000kg, ...

Remelted lead

Specifications:

Pb 98% min

Packing: ingot, packed in bundle 1500kg, ...

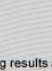


METALS DEPARTMENTS - PRODUCTS

#	Products	Specification
1	ADC 12	Cu 1.5 - 3.5%, Si 9.6 - 12%, Mg 0.3% max, Zn 1.0% max, Fe 1.0% max, Mn 0.50% max, Ni 0.50 max, Sn 0.30% max, Pb 0.1% max
2	ADCSH	Cu 1.0-2.5%, Si 9.0 - 11%, Mg 0.5% max, Zn 2.0% max, Fe 1.1% max, Mn 0.50% max, Ni 0.50% max, Sn 0.30% max, Pb 0.1% max
3	HD2	Cu 1.5 - 4.0%; Si 10.5 - 12%; Mg 0.05-0.35% max; Zn 2.5% max; Fe 1.1% max; Mn 0.50% max; Ni 0.50% max; Sn 0.20% max; Pb 0.2% max
4	Al 96%	Al 96% min, Si 0.6% max, Fe 1.0% max, Cu 0.4% max, Mn 0.9% max, Mg 1.65% max, Zn 0.5% max, Pb 0.1% max.
5	Al 94%	Al 94% min, Si 1.0% max, Fe 3.0% max, Cu 1.0% max, Mg 1.0% max
6	Al 6063	Cu 0.1% max, Si 0.2 – 0.6%, Mg 0.45 - 0.9%, Zn 0.1% max, Fe 0.35% max, Mn 0.10% max, Cr 0.10% max
7	AZ91D	Mg 89.6% min, Al 8.3 - 9.7 %, Zn 0.35 - 1.0%, Si 0.1% max, Mn 0.15-0.5%, Be 0.002% max
8	Pure Mg	Mg 99.9% min
9	SHG	Zn: 99.995% min
10	Zamak3	Al 3.9-4.2%, Tl 0.001% max, Sn 0.001% max, Si 0.02% max, Pb 0.003% max, Ni 0.001% max, Mg 0.04-0.05%, In 0.0005% max, Fe 0.02% max, Cu 0.03% max, Cd 0.002% max
11	Pure lead	Pb 99.97% min, Pb 99.99% min
12	Remelted lead	Pb 98% min



SGS AI 96%



Page N°: 3/3

Certificate N°: 2204010591

The testing results as lab report No. HPM22- 18083 R0 as follows:

Characteristics	Unit	Testing results	Testing methods
Al	%	96.74 (Nine six decimal seven four)	LMIN-HAPG-TST- SOP-8247
Cu	%	0.23 (Zero decimal two three)	
Zn	%	0.18 (Zero decimal one eight)	
Fe	%	0.54 (Zero decimal five four)	
Mn	%	0.69 (Zero decimal six nine)	
Mg	%	1.24 (One decimal two four)	ASTM E3061-17
Ti	%	0.018 (Zero decimal zero one eight)	
Pb	%	0.024 (Zero decimal zero two four)	
Ni	%	0.006 (Zero decimal zero zero six)	
Si	%	0.37 (Zero decimal three seven)	
Cr	%	0.025 (Zero decimal zero two five)	
Sn	%	0.002 (Zero decimal zero zero two)	
Ca	%	0.004 (Zero decimal zero zero four)	
Cd	%	0.0001 (Zero decimal zero zero zero one)	

Details of the bridge scale:

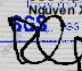
Verification stamp: 21A00149


Calibrated by: VMC

Calibration date: 04/09/2021

Next calibration due: 30/09/2022

SGS VIETNAM LTD
Nguyen Xuan Bach
SGS Vietnam Ltd





SGS Vietnam Ltd.
 198 Nguyen Thi Minh Khai Street
 Ward 6, District 3
 Ho Chi Minh City - Vietnam
 T: + 84 28 3935 1920
 F: + 84 28 3935 1921

This document is issued by the Company subject to its General Conditions of Service. Any reproduction, modification or falsification of this document is strictly prohibited and is liable to prosecution. The Company is not responsible for the use of this document by the Client. The Client is responsible for the use of this document. Any unauthorized alteration, forgery or falsification of the content or appearance of this document is prohibited and may be prosecuted in the relevant courts of law.

The authenticity of this document may be verified at: www.sgslab.com

VILAS TEST AL 96%

T.K

TKDHP

VILAS1080

CÔNG TY TNHH MTV THỬ NGHIỆM VÀ KIỂM ĐỊNH HẢI PHÒNG

HAI PHONG TESTING AND VERIFICATION ONE MEMBER LIMITED COMPANY

Head office: No157- Lot Nơ- So Duu New Urban Area- So Duu Ward-Hong Bang District- HaiPhong City

Tel: (+84) 0225.6588333 Fax: (+84) 0225.6588333

Email: thungienkiemdinhhaiphong@gmail.com

KẾT QUẢ THÍ NGHIỆM

TEST RESULTS

Số Báo cáo: CH3001-24/Lab

Ngày: 30/01/2024

1. Khách hàng (Client): CÔNG TY CỔ PHẦN THƯƠNG MẠI ĐẦU TƯ VẠN LONG CDC

2. Địa chỉ (Address): Khu An Trì, Phường Hùng Vương, Quận Hồng Bàng, Tp Hải Phòng.

3. Mã số thuế : 0200835768

4. Tên mẫu (Type of sample): Mẫu nhôm 12-1

5. Thiết bị thí (Equipment of testing): Máy Quang Phổ Phát Xạ Spectromax

6. Phương pháp thử (Method of Testing): ASTM E1251 : 2017

7. Ngày thí nghiệm (Date of testing): 30/01/2024

8. Nội dung: Xác định thành phần hóa học của Vật Liệu

THÀNH PHẦN HÓA HỌC

(CHEMICAL COMPOSITION %)

Si	Fe	Cu	Mn	Mg	Cr	Ni	Zn
0.312	0.678	0.176	0.684	0.837	0.0196	0.0050	0.175
Ti	Ag	B	Ba	Be	Bi	Ca	Cd
0.0229	0.00033	0.0023	0.00010	0.00005	0.0021	0.00024	0.0018
Ce	Co	Ga	Hg	In	La	Li	Mo
0.0015	0.00050	0.0106	0.00100	0.00030	0.00030	0.00010	0.00055
Na	P	Pb	Sb	Sn	Sr	V	Zr
0.00010	0.00100	0.0107	0.0030	0.0048	0.00010	0.0143	0.0041
Se	Al						
0.0500	97.0						

Ghi chú (Notice):

Kết quả này chỉ có ý nghĩa trên mẫu thử.

(Result only for the sample)

NGƯỜI KIỂM TRA

(Tester)

PHẠM THANH HUYỀN

PHÒNG THÍ NGHIỆM

Hải Phòng

Hải Phòng, ngày 30 tháng 01 năm 2024

PHẠM THANH HUYỀN

GIÁM ĐỐC

(Director)

MỘT THÀNH VIÊN

CÔNG TY TNHH

KIỂM ĐỊNH HẢI PHÒNG

CHẤM ĐÓC

Trang: 1/1

No of pages

Không được sao chép rời khi kết quả thí nghiệm có dấu trong nếu không được sự đồng ý bằng văn bản của PTN

This certificate shall not be reproduced except in full, without the written approved of laboratory

Mẫu: TM-01/H

SPECTRO TEST ADC12

AMETEK
NATURAL ANALYTICAL DIVISION

Measure Date Time	Method Name	Type	Type Corr Sample Name							
23/02/2024 14:22:03 CH	Al-01-F	Unknown								
KNOCK HANG	TEN MAU	Grade Norm	Grade ID							
Van long	Mau thom 2	MAU2								
Elem	Si	Fe	Cu	Mn	Mg	Cr	Ni	Zn	Ti	Ag
	%	%	%	%	%	%	%	%	%	%
1	0.401	0.888	0.215	0.739	1.38	0.0217	0.0089	0.122	0.0204	0.00029
CP	0.401	0.888	0.215	0.739	1.38	0.0217	0.0089	0.122	0.0204	0.00029
SD	--	--	--	--	--	--	--	--	--	--
RSD	--	--	--	--	--	--	--	--	--	--
Elem	B	Ba	Be	Bi	Ca	Cd	Ce	Co	Ga	Hg
	%	%	%	%	%	%	%	%	%	%
1	0.0028	0.00088	<0.00005	0.0038	0.00080	0.00074	<0.0015	<0.00050	0.0123	0.0014
CP	0.0028	0.00088	<0.00005	0.0038	0.00080	0.00074	<0.0015	<0.00050	0.0123	0.0014
SD	--	--	--	--	--	--	--	--	--	--
RSD	--	--	--	--	--	--	--	--	--	--
Elem	In	La	Li	Mo	Na	P	Pb	Sb	Sr	
	%	%	%	%	%	%	%	%	%	%
1	<0.00030	<0.00030	<0.00010	0.0027	0.0020	0.0054	0.0126	<0.0030	0.0041	<0.00010
CP	<0.00030	<0.00030	<0.00010	0.0027	0.0020	0.0054	0.0126	<0.0030	0.0041	<0.00010
SD	--	--	--	--	--	--	--	--	--	--
RSD	--	--	--	--	--	--	--	--	--	--
Elem	V	Zr	Sc	Al						
	%	%	%	%						
1	0.0136	0.0045	<0.00020	98.1						
CP	0.0136	0.0045	<0.00020	98.1						



Added value – Trusted value

VanLongCDC

METALS DEPARTMENT - LOGISTICS

18

Loading and delivering pictures at customers' warehouse and Van Long CDC warehouse



Delivery at HEV



Weighting export goods



Delivery at Van Long CDC warehouse



Added value – Trusted value

VanLongCDC

METALS DEPARTMENT– TYPICAL CUSTOMERS

19



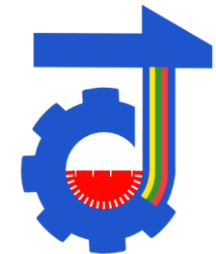


Added value – Trusted value

VanLongCDC

METALS DEPARTMENT– TYPICAL SUPPLIERS

20





Added value – Trusted value

VAN LONG CDC OVERVIEW– BUSINESS CULTURE

VanLongCDC

21

To support commercial business activities, Van Long CDC prioritizes training programs, extracurricular activities, and employee welfare. Van Long CDC highly values the individual worth of each person and always provides opportunities for everyone to develop and grow together.



CUSTOMER CONFERENCE



TRAINING



ANNUAL TOURISM



FRIENDLY FOOTBALL



Added value – Trusted value

VanLongCDC

VAN LONG CDC INVESTMENT TRADING JOINT STOCK COMPANY

22

THANK YOU

FOR MORE INFORMATION:

www.vcdc.com.vn

www.hoachathaiha.vn